

# Madison, WI

Spatial Resolution = 30 m

Classification 1



## Legend

- |   |                |
|---|----------------|
|    | 2. Evergreen   |
|    | 7. Water       |
|   | 11. Other Veg. |
|  | 17. Alfalfa    |
|  | 20. Deciduous  |
|  | 28. Corn       |
|  | 29. Impervious |

# Madison, WI

Spatial Resolution = 30 m

Classification 2

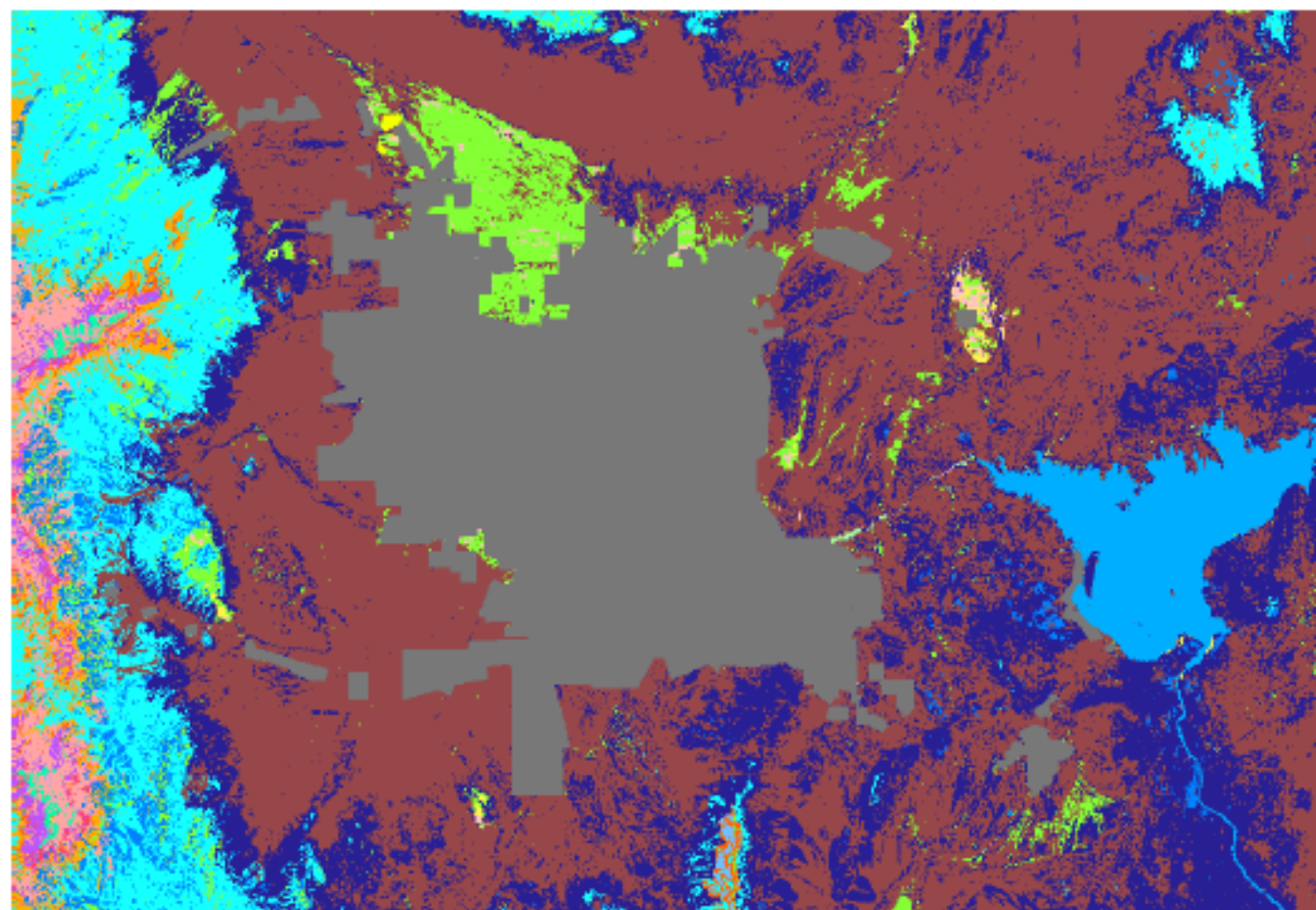


## Legend

- 2. Evergreen
- 7. Water
- 11. Other Veg.
- 17. Alfalfa
- 20. Deciduous
- 28. Corn
- 29. Impervious

# Las Vegas, NV and vicinity

Spatial Resolution = 100 m









## Legend

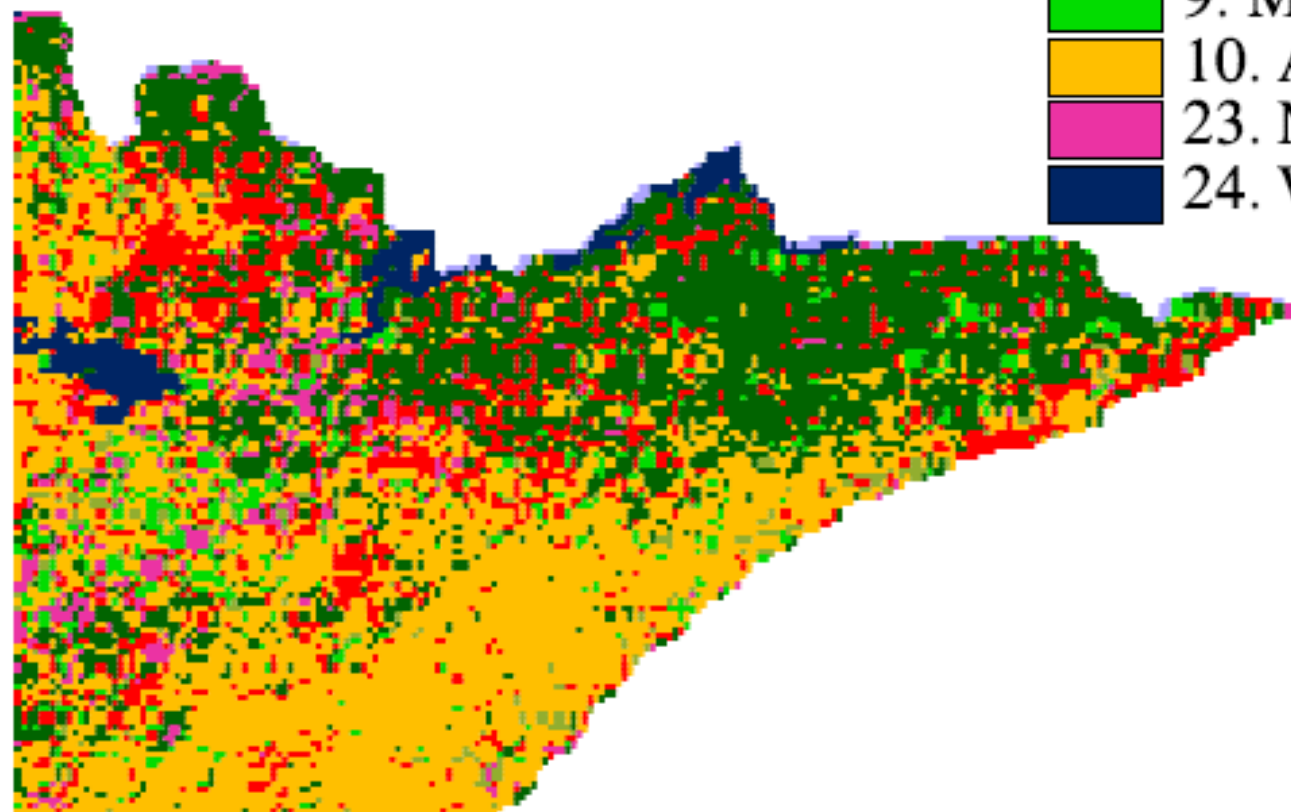
- |   |                               |
|---|-------------------------------|
|    | 1. Water                      |
|    | 2. Barren                     |
|    | 7. Pinyon 1                   |
|    | 8. Pinyon 2                   |
|    | 9. Juniper 1                  |
|    | 10. Juniper 2                 |
|    | 11. Pinyon Juniper 1          |
|    | 12. Pinyon Juniper 2          |
|    | 13. Mojave Mixed Scrub        |
|    | 14. Creosote-Bursage          |
|    | 15. Blackbrush                |
|    | 16. Salt Desert Scrub         |
|    | 17. Sagebrush                 |
|    | 19. Ponderosa Pine 2          |
|    | 21. Mojave Riparian           |
|    | 22. Mountain Shrub            |
|   | 23. Mountain Sagebrush        |
|  | 25. Hopsage                   |
|  | 26. Sagebrush/Perennial Grass |
|  | 27. Grassland                 |
|  | 30. Playas                    |
|  | 34. Shallow Water             |
|  | 39. Agriculture               |
|  | 40. Urban                     |
|  | 44. Mountain Riparian         |

# Superior National Forest, MN and vicinity

Spatial Resolution = 1 km

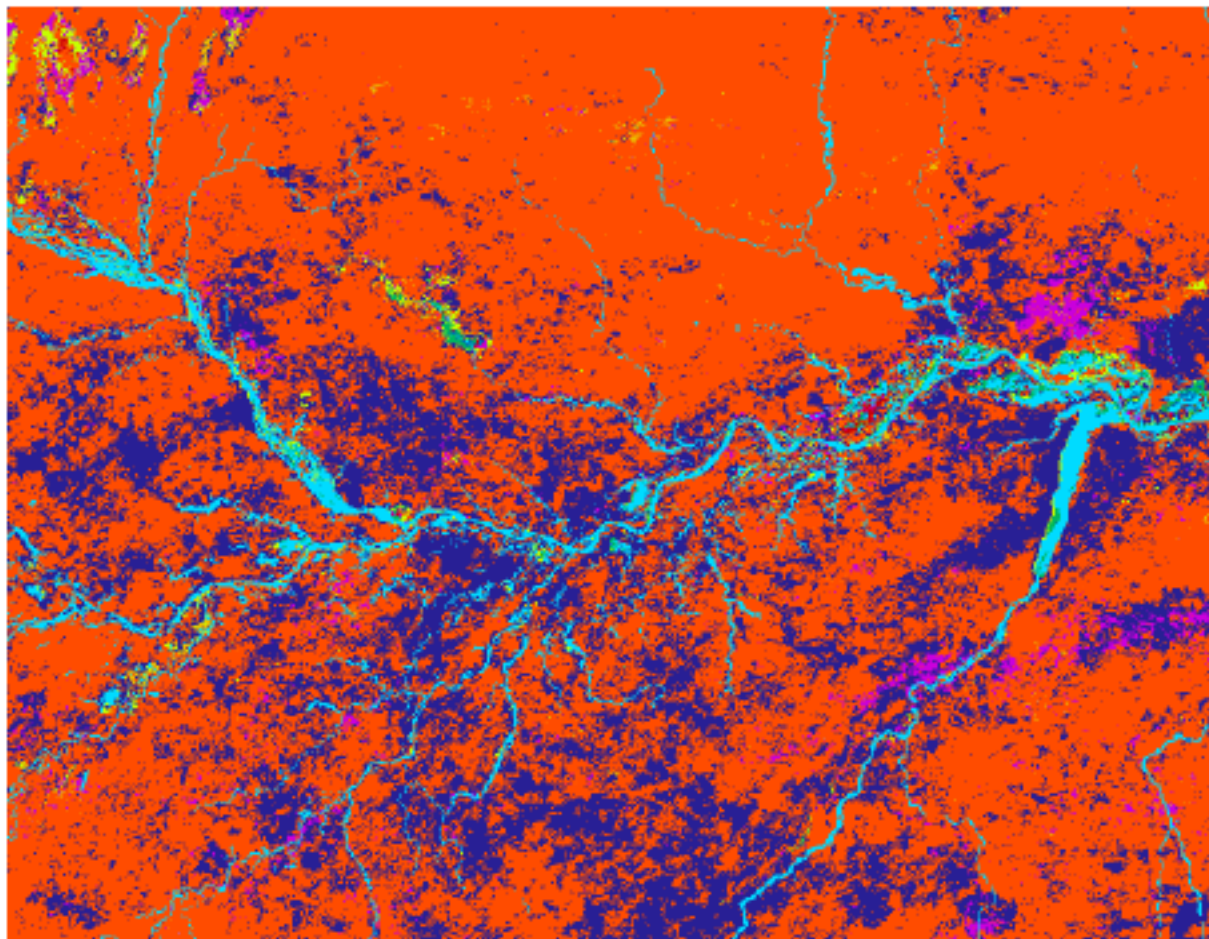
## Legend

- |   |                          |
|---|--------------------------|
|  | 0. Unclassified          |
|  | 1. White, Red, Jack Pine |
|  | 2. Spruce, Fir           |
|  | 6. Oak, Hickory          |
|  | 9. Maple, Beech, Birch   |
|  | 10. Aspen-Birch          |
|  | 23. Nonforested Land     |
|  | 24. Water                |



# Brazilian Amazon

Spatial Resolution = 1 km



## Legend

- 5. Mixed Forest
- 6. Closed Shrublands
- 7. Open Shrublands
- 8. Woody Savannas
- 9. Savannas
- 10. Grasslands
- 12. Croplands
- 13. Urban and Built-Up
- 17. Water Bodies
- 2. Evergreen Broadleaf Forest
- 4. Deciduous Broadleaf Forest
- 14. Cropland/Natural Vegetation Mosaic
- 16. Barren or Sparsely Vegetated